



OIS Digital Slit Lamp Products

Continuous live-motion imaging. High-resolution still frames. Anterior and posterior segment evaluation.

Highlights

- Live-motion, dynamic documentation
- High resolution still frames on photo slit lamps
- Interfaces to most existing slit lamps
- Files compatible with Microsoft* PowerPoint and other presentation software
- Ideal for patient education and documentation

The Digital Slit Lamp Imager™ (DSL) and Photo Slit Lamp Imager™ (PSLI) from OIS. Whether you need dynamic live-motion or high-resolution still frames, you can now capture sharp clinical detail.

The DSLI integrates seamlessly with your existing slit lamp, providing excellent live-motion documentation of both anterior and posterior segments. With a simple press of a foot switch, you can activate live-motion recording, without ever looking away from your patient. And files are stored directly to the computer hard drive, where they're instantly available for review.

The PSLI includes a high-resolution digital still frame camera that connects to your photo slit lamp for images of the anterior and posterior segment. These journal-quality images are excellent for documentation, presentation, and patient education. With a skilled ophthalmic photographer, your PSLI image quality can rival photographic film.

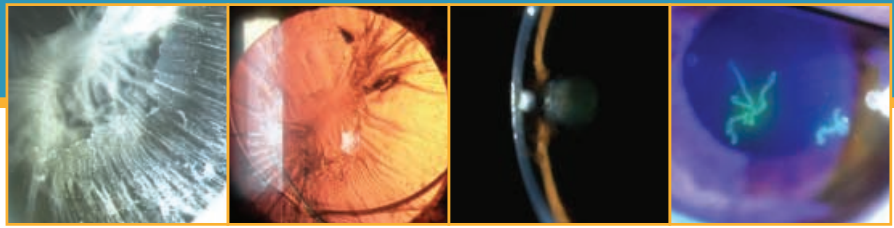
Powerful Yet Affordable

The OIS DSLI and PSLI are based on fast Intel* Pentium* processors, with superior memory and dual hard disk drive configurations that let you take advantage of OIS's secure archiving technology. Our system gives you image backup redundancy and online access to several years of procedures, eliminating the need to insert old CDs. Images are captured directly to the hard drive while other background tasks—including building proof sheets and printing—streamline patient throughput. Macros let you batch commonly performed image enhancements. Archiving is efficient, and image retrieval is automatic and seamless from local or remote offices.

Scalable Solutions

Like its siblings, the OIS WinStation DSLI and PSLI software are characteristically powerful and simple, yet highly configurable and scalable to meet the most demanding networking requirements.





OIS Digital Slit Lamp Products

Image Processing Features

- Enhance contrast
- Various sharpening filters
- Zoom
- Smooth
- Negative
- Slide show
- 4-up display
- 9-up display
- Measurement
- Image editor—PaintShop Pro*
- Macro
- Downloading
- Multiple visit compare
- Optic nerve head analysis
- Annotation

Photographer-Friendly User Interface

OIS's extensive background in ophthalmic photography translates to products with intuitive, user-friendly interfaces. Image enhancement functions are easily accessed by pull-down menus or by toolbar icons. Multiple visits can be easily compared on a single screen.

Hard-copy and E-mail Output

The DSLI and PSLI provide added flexibility by supporting multiple output modes, including e-mail. Hard-copy options range from simple prints for basic image documentation to high-resolution, dye-sublimation photographic prints for referrals. Images can be downloaded and converted to a variety of file formats that are easily imported into other programs for slides, image processing, graphics, and communications.

Specifications** OIS Digital Slit Lamp Imager*** OIS Photo Slit Lamp Imager****

<i>Computer</i>	Mini tower Intel* Pentium* Processor 1-GB RAM or more Dual 120-GB hard drives or larger 3.5" 1.44-MB floppy drive Enhanced keyboard Two-button scroll mouse Power strip	Mini tower Intel* Pentium* Processor 1-GB RAM or more Dual 120-GB hard drives or larger 3.5" 1.44-MB floppy drive Enhanced keyboard Two-button scroll mouse Power strip
<i>Monitor</i>	17" flat panel color	17" flat panel color
<i>Archiving</i>	8X/32X/16X/40X DVD-Recorder and CD-Recorder	8X/32X/16X/40X DVD-Recorder and CD-Recorder
<i>Networking and Telemedicine</i>	Gigabit Ethernet card 56K V90 modem Remote access software	Gigabit Ethernet card 56K V90 modem Remote access software
<i>Image Capture</i>	High-resolution color video camera @ 704x576 pixels	Ultra high-resolution 3-6 mega-pixel options
<i>Software</i>	Windows* XP Professional OIS WinStation Live Motion PC Anywhere* Norton AntiVirus* PaintShop Pro*	Windows* XP Professional OIS WinStation PC Anywhere* Norton AntiVirus* PaintShop Pro*
<i>Dimensions</i>	21"x43" footprint 100V/50-60 Hz– 240V/50-60 Hz	21"x43" footprint 100V/50-60 Hz– 240V/50-60 Hz
<i>Warranty</i>	1 year parts and labor (extended warranty available)	1 year parts and labor (extended warranty available)
<i>Accessories</i>	Printer	

*All brand names are the property of their respective owners.

** OIS endeavors to constantly update and improve upon the technology. Consequently, product specifications may change without notice. Image resolution will vary depending on fundus camera and video adapter in use.

†Slit lamp, beam-splitter, and camera adapters to be supplied by customer.

OPHTHALMIC IMAGING
S Y S T E M S

221 Lathrop Way, Suite I • Sacramento, CA 95815 • (800) 338-8436 • (916) 646-2020 • Fax: (916) 646-0207 • info@oisi.com

www.oisi.com