

NEW



Images: Richard Hackel CRA, Kellogg Eye Center

*AUTO*MONTAGE™

The retinal
universe in one
panoramic view.
Automatically.

OPHTHALMIC IMAGING
SYSTEMS

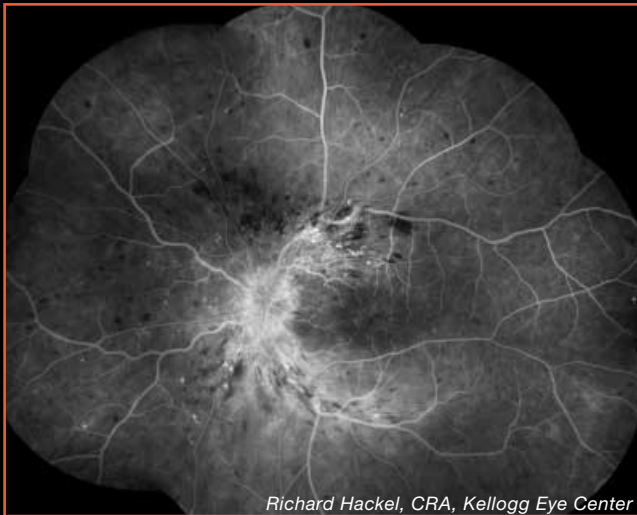
Look to the Leader



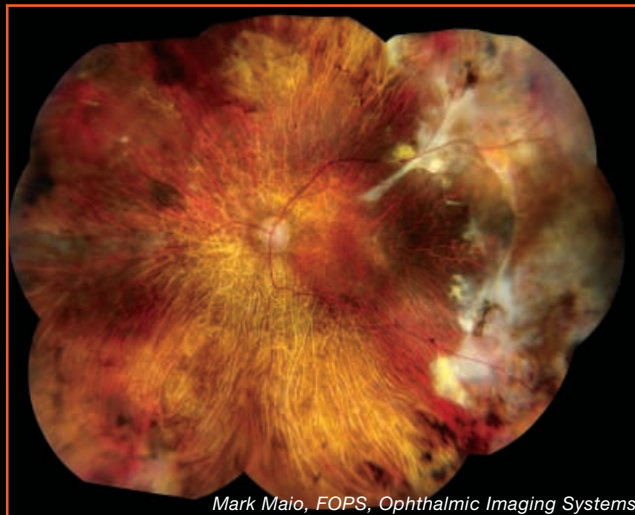
Patrick J. Saine, M.Ed., CRA, Dartmouth Hitchcock Medical Center



Richard Hackel, CRA, Kellogg Eye Center



Richard Hackel, CRA, Kellogg Eye Center



Mark Maio, FOPS, Ophthalmic Imaging Systems

It's not just a montage.

It's AutoMontage™ from OIS, retinal images seamlessly merged into one color-corrected view...*automatically*. AutoMontage gives you a wide field view of the retina and the ability to magnify the most subtle retinal details.

For ultra-high resolution imaging, innovative new features, responsive service, and connectivity...

Look to the Leader

OPHTHALMIC IMAGING
S Y S T E M S

AUTOMONTAGE™

The retinal universe in one panoramic view. *Automatically.*